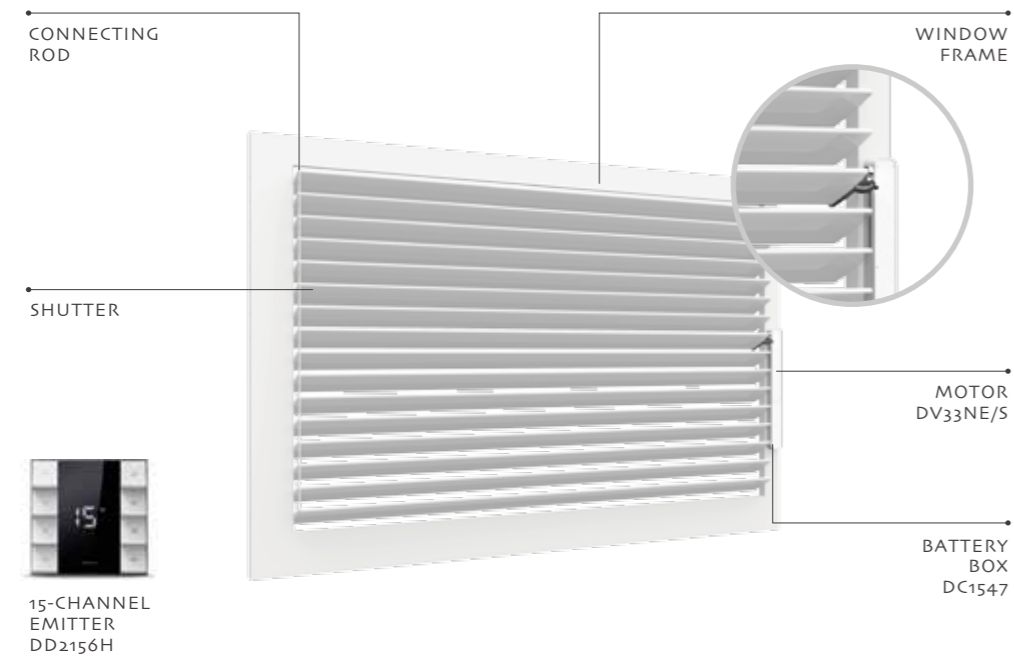
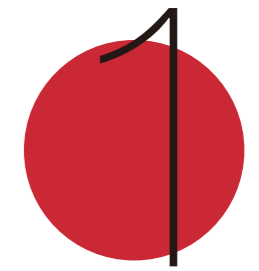
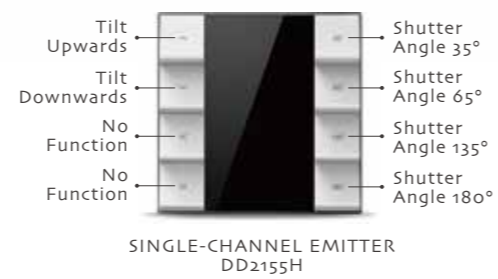
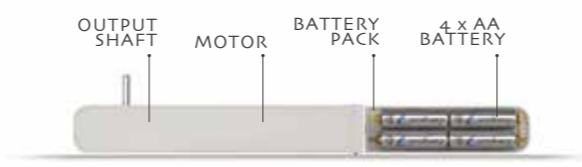


SURFACE-MOUNTING MOTOR FOR WOOD SHUTTER



15-CHANNEL EMITTER DD2156H



More References :

DV33NE/S

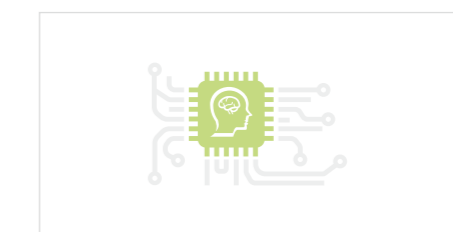
DV33NE/S

Electronic Limit, Bi-directional Radio Control

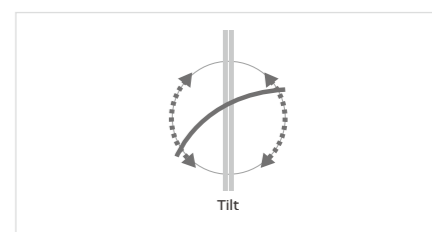


FEATURES:

- Electronic Limit
- Built-in Receiver
- Memorized Setting
- Tilt Only
- Preferred Stop Position
- Stall Protection
- Program/Reset Button
- DC Power Supply
- Bi-directional Radio Control
- Smartphone Control



Memorized Setting



Tilt Only



Electronic Limit



Low Voltage



	Rated Torque (Nm)	Rated Speed (Rpm)	Radio Frequency (MHz)	Rated Current (A)	Rated Power (W)	Degree Of Protection (IP)	Maximum Limit Turn (turn)	Running Time (min)	Working Temperature (°C)	Length L (mm)
DV33NE/S-0.2/30	0.2	30	433 [#]	0.27	2	IP20	/	>6	-10°C~50°C	205

Note: Above-listed are common information for reference. Please consult Dooya export team for technical details or customization specs.